

MP / A / E / G, Green Series

Features

- Wire lug or pC terminals
- Customer selected actuator cap size and color on MPA series
- MPE series sealed to IP65
- Entire series with epoxy sealed terminals
- Actuator guards, decorative hardware, and silicone boot seals available



Typical performance characteristics

Contact configuration SPDT, DPDT, 3PDT, 4PDT
 Contact timing Break-Before-Make
 Contact rating max. 6 A @ 125 VAC, 3 A @ 250 VAC
 Electrical life push on/push off: 30,000 cycles
 momentary: . 20,000 cycles
 Contact resistance, initial. 10 mOhms max.
 Insulation resistance 1,000 MOhms min.
 Dielectric strength. 1,500Volts rms @ sea level
 Actuation force 4 to 20 N (400 to 2000 gf)
 Actuator travel 3.55 mm

Environmental specification

Operating temperature -20°C to +80°C
 Storage temperature -40°C to +80°C
 Solder heat resistance wave solder capable to 265°C
 Seal mpe switches IP65

Material specifications

Contacts copper alloy silver clad
 Actuator brass nickel plated
 Terminals copper alloy gold plated
 Case alkyd polyester (green)UL94 V-O
 Frame. stainless steel
 RoHS Directive 2002/95/EC compliant

Pushbutton Switches

Product key

Typical product key

MP A 1 06 D 04

Type

MP Green Series Pushbutton Switches, panel mount

Bushing style

A 1/4-40 3.4mm actuator
E 1/4-40 3.4mm actuator with 'O' rings
G 15/32-32 large actuator

Number of poles

1 single pole **3** 3 poles
2 double pole **4** 4 poles

Rating

06 6 Amp

Function

D 1 & 3 pole push-on/push-off
F momentary **N** 2 & 4 pole push-on/push-off
R momentary

Terminals

blank wire lug **PC** printed circuit board

Material

04 RoHS compliant

MP/A/E/G, Green Series (Continued)

Bushing style A

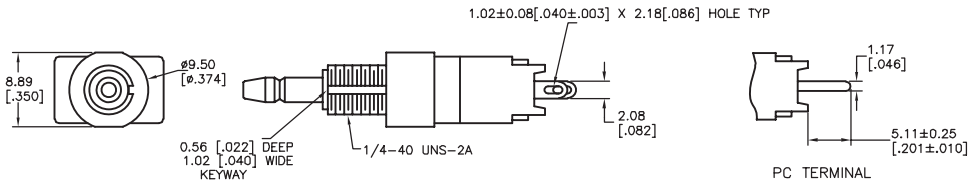
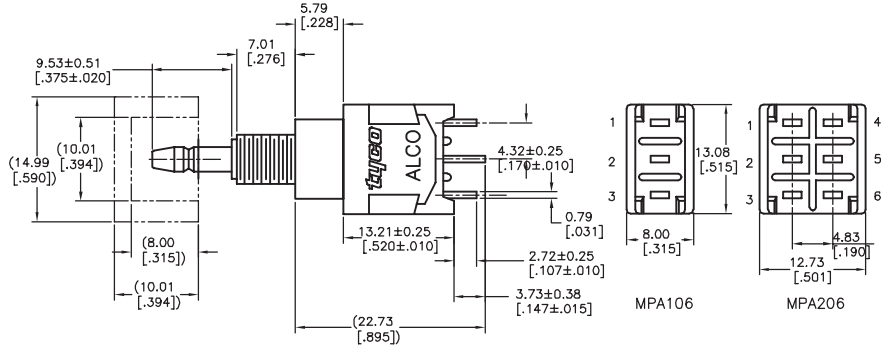
single & double pole



MPA106D



MPA206N



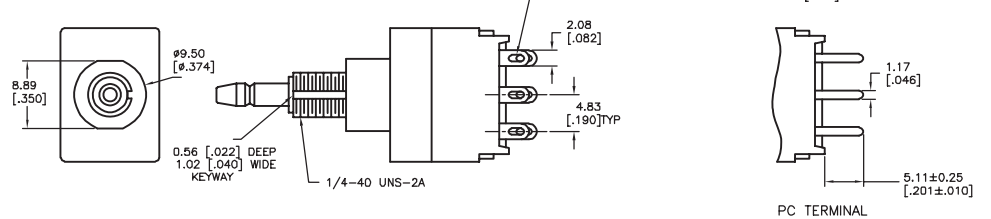
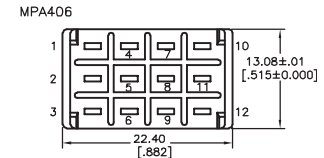
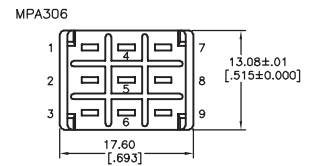
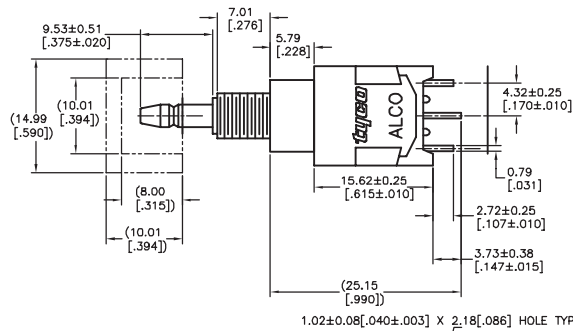
3 & 4 pole



MPA306D

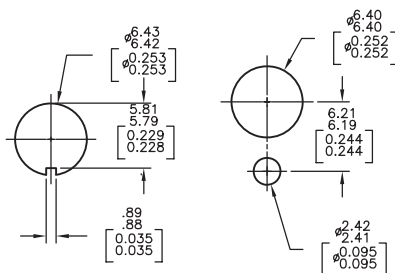


MPA406N

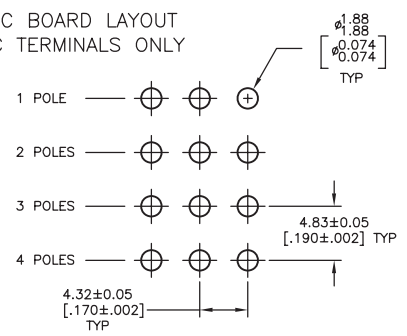


mounting

RECOMMENDED HOLE LAYOUT TO PREVENT ROTATION



PC BOARD LAYOUT PC TERMINALS ONLY



MP / A / E / G, Green Series (Continued)

Bushing style E



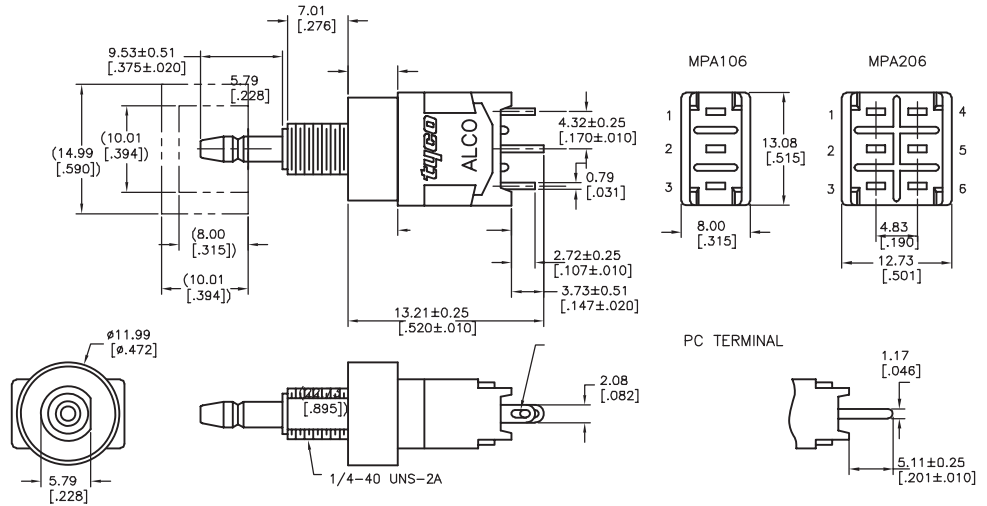
single & double pole



MPE106D



MPE206N



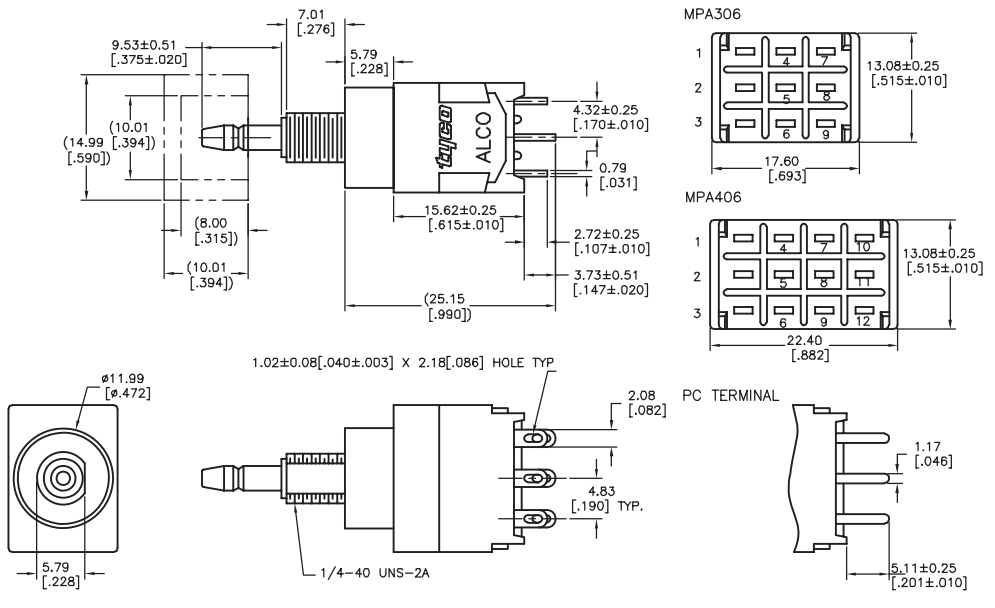
3 & 4 pole



MPE306F

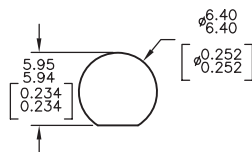


MPE406N

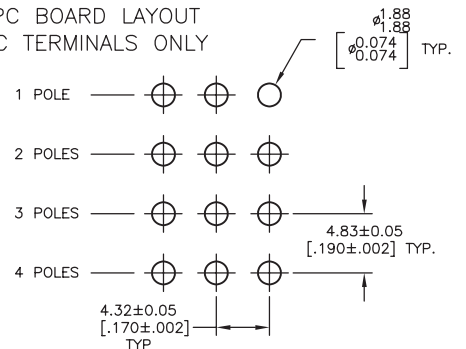


mounting

RECOMMENDED HOLE LAYOUT TO PREVENT ROTATION



PC BOARD LAYOUT PC TERMINALS ONLY



MP / A / E / G, Green Series (Continued)

Bushing style G

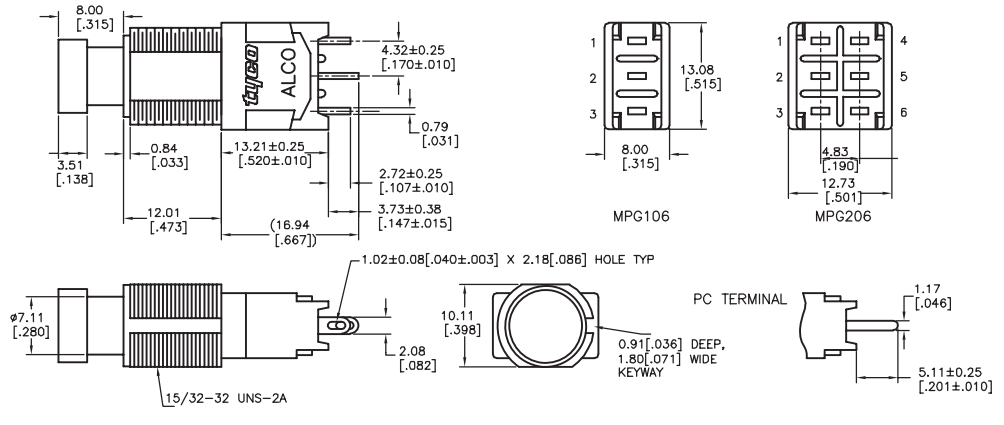
single & double pole



MPG106D



MPG206NPC



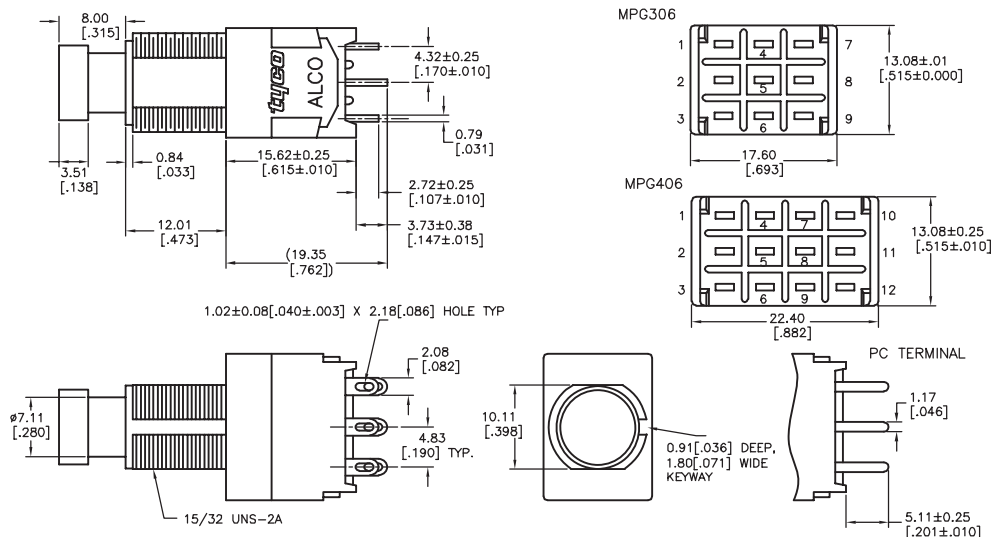
3 & 4 pole



MPG306D

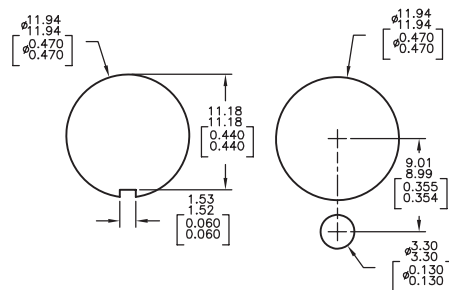


MPG406N

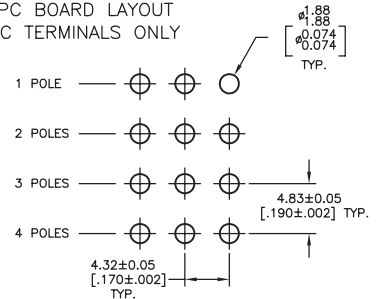


mounting

RECOMMENDED HOLE LAYOUT TO PREVENT ROTATION







PC BOARD LAYOUT PC TERMINALS ONLY



MP / A / E / G, Green Series (Continued)

Function 

| Fct. | Poles |  |  |  |  |
|------|-------|-----------------------------------------------------------------------------------|-----------------------------------------------------------------------------------|-----------------------------------------------------------------------------------|-------------------------------------------------------------------------------------|
| D | 1 | On | On | 2-1 | 2-3 |
| F | 1 | On | (On) | 2-1 | 2-3 |
| N | 2 | On | On | 2-1, 5-4 | 2-3, 5-6 |
| R | 2 | On | (On) | 2-1, 5-4 | 2-3, 5-6 |
| D | 3 | On | On | 2-1, 5-4, 8-7 | 2-3, 5-6, 8-9 |
| F | 3 | On | (On) | 2-1, 5-4, 8-7 | 2-3, 5-6, 8-9 |
| N | 4 | On | On | 2-1,5-4,8-7,11-10 | 2-3,5-6,8-9,11-12 |
| R | 4 | On | (On) | 2-1,5-4,8-7,11-10 | 2-3,5-6,8-9,11-12 |

Off indicates a mechanical position with no electrical connection
(On) indicates momentary connection

Pushbutton Switches

| Product key | Bushing | No. of poles | Rating | Function | Terminals | Material | Part Number |
|--------------------|---------------|--------------|--------|------------------|-----------|----------------|--------------------|
| MPA106D04 | 1/4-40 | single pole | 6 Amps | push-on/push-off | wire lug | RoHS compliant | 1825040-1 |
| MPA106F04 | 3.4mm | | | momentary | | | 1825040-2 |
| MPA106DPC04 | actuator | | | push-on/push-off | pcb | | 1825040-3 |
| MPA106FPC04 | | | | momentary | | | 1825040-4 |
| MPA206N04 | | double pole | | push-on/push-off | wire lug | | 1825040-5 |
| MPA206NPC04 | | | | | pcb | | 1825040-6 |
| MPA206R04 | | | | momentary | wire lug | | 1825040-7 |
| MPA206RPC04 | | | | | pcb | | 1825040-8 |
| MPA306D04 | | 3 poles | | push-on/push-off | wire lug | | 1825040-9 |
| MPA306F04 | | | | momentary | | | 1-1825040-0 |
| MPA406N04 | | 4 poles | | push-on/push-off | | | 1-1825040-1 |
| MPA406R04 | | | | momentary | | | 1-1825040-2 |
| MPE106D04 | 1/4-40 | single pole | | push-on/push-off | | | 1825041-1 |
| MPE106F04 | 3.4mm | | | momentary | | | 1825041-2 |
| MPE206N04 | actuator | double pole | | push-on/push-off | | | 1825041-3 |
| MPE206R04 | with 'O' ring | | | momentary | | | 1825041-4 |
| MPE306D04 | | 3 poles | | push-on/push-off | | | 1825041-5 |
| MPE306F04 | | | | momentary | | | 1825041-6 |
| MPE406N04 | | 4 poles | | push-on/push-off | | | 1825041-7 |
| MPE406R04 | | | | momentary | | | 1825041-8 |
| MPG106D04 | 15/32-32 | single pole | | push-on/push-off | | | 1825042-1 |
| MPG106DPC04 | large | | | push-on/push-off | pcb | | 1825042-2 |
| MPG106F04 | actuator | | | momentary | wire lug | | 1825042-3 |
| MPG106FPC04 | | | | | pcb | | 1825042-4 |
| MPG206N04 | | double pole | | push-on/push-off | wire lug | | 1825042-5 |
| MPG206NPC04 | | | | | pcb | | 1825042-6 |
| MPG206R04 | | | | momentary | wire lug | | 1825042-7 |
| MPG206RPC04 | | | | | pcb | | 1825042-8 |
| MPG306D04 | | 3 poles | | push-on/push-off | wire lug | | 1825042-9 |
| MPG306F04 | | | | momentary | | | 1-1825042-0 |
| MPG406N04 | | 4 poles | | push-on/push-off | | | 1-1825042-1 |
| MPG406R04 | | | | momentary | | | 1-1825042-2 |

Preferred parts in bold print